

IMPROVING QUALITY IN PUBLIC SECTOR NURSING INSTITUTES - NIME

MUST. SALMA KHATUN, ASST. PROFESSOR

College of Nursing, Mohakhali

NATIONAL NURSING LEADERSHIP CONFERENCE

14 FEBRUARY 2016

PURPOSE OF PRESENTATION

- To Introduce the DNS Program about Nursing Institute Monitoring & Evaluation (NIME) and our experience to date



WHAT I PLAN TO COVER

- Why quality is important in nursing education
- Why NIME was developed
- NIME structure & functions
- Plans for Monitoring Visits



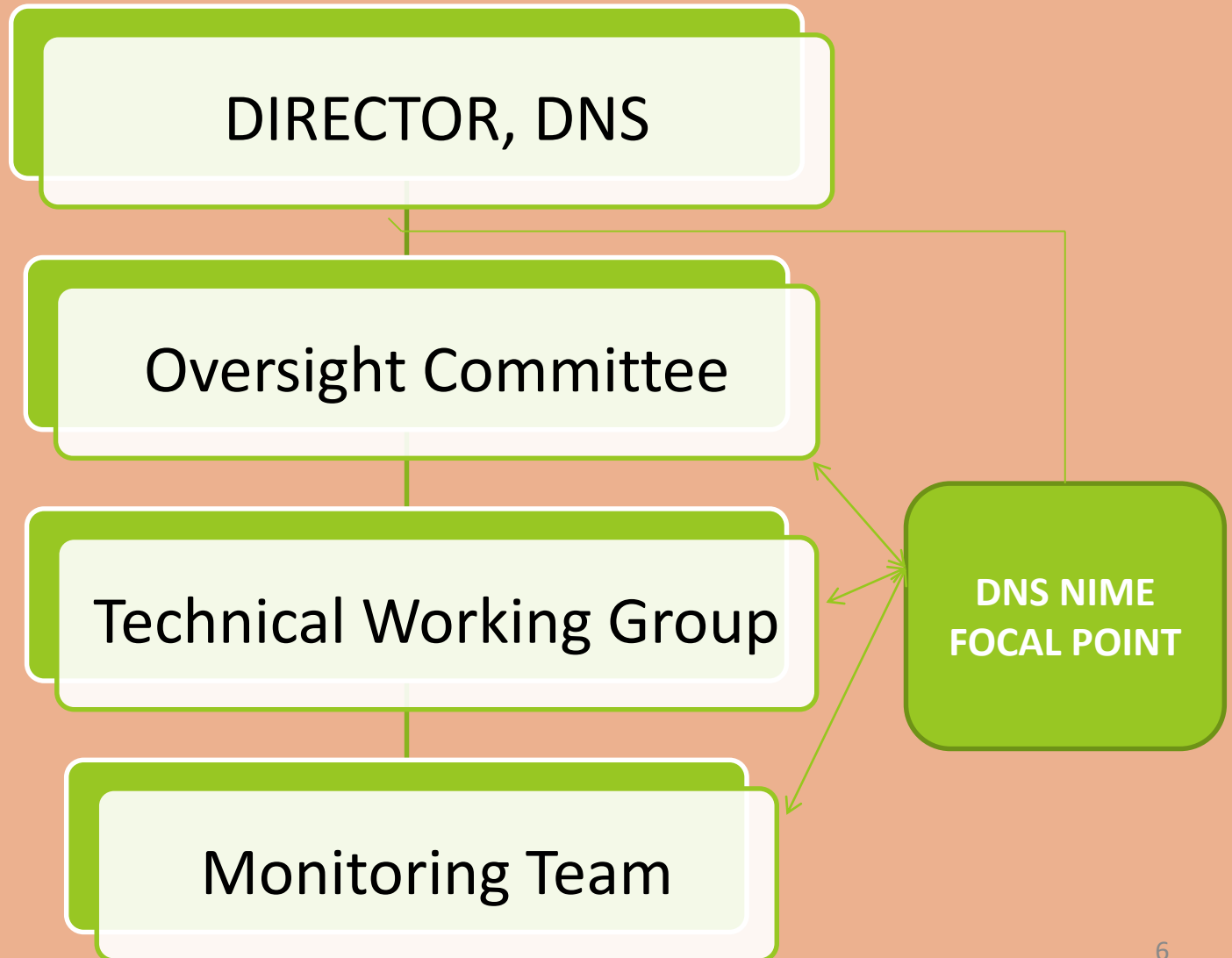
Quality is important in Nursing Education

- ✓ To prepare students for licensure
- ✓ To ensure production of competent, ethical graduates who can provide holistic, safe patient care
- ✓ To attract and retain students and faculty
- ✓ To gain the trust of future employers & of the public
- ✓ To ensure a sound international reputation

BACKGROUND

- NIME established to improve the quality of N/M education in the public sector Nursing Institute (NIs)s through regular monitoring and feedback
- Program is built on the new BNC accreditation standards. The criteria have been adapted to reflect our current needs

The NIME Program Structure



OSC TERMS OF REFERENCE

- To receive the monitoring and evaluation reports compiled by the Focal Point
- To prescribe follow up action
- To develop an annual report of M& E activities and share these with NNPPC
- To review policies and key processes annually and amend these as needed
- To address any other issues as required pertaining to NI monitoring and evaluation

THE TECHNICAL WORKING GROUP

- ✓ Develops the standards, guidelines, plans, processes and tools for NI monitoring
- ✓ Trains the monitors and maintains a bank of monitors
- ✓ Supports monitors (e. g. responds to issues raised by monitors in preparation for their visits or in writing up their reports)
- ✓ Reviews monitor reports and submits compiled reports to the OSC
- ✓ Does not attribute information on the basis of named persons; using combined data as much as possible

NI MONITORING GUIDELINE

- ✓ Follows applicable BNC accreditation standards
- ✓ Criteria adapted to needs of NIs
- ✓ Main tool used in carrying out the monitoring role - it provides interpretation of terms, abbreviations and criteria as well as suggesting data collection sources and approaches

MONITORING GUIDELINE

Based on 5 standards:

1. The governance of the NI supports good quality education
2. The NI admits, assesses and supports students
3. Students are taught by well qualified instructors in the classroom and in clinical placements
4. Delivery of the national curriculum for N-M fosters good student outcomes
5. The NI has the resources to provide good learning environment for teaching and learning

STRUCTURE OF THE GUIDELINE

STANDARD 1. THE GOVERNANCE OF THE NURSING INSTITUTE SUPPORTS GOOD QUALITY EDUCATION

MONITORING CRITERIA	MET	PARTLY MET	NOT MET	OBSERVATIONS
<p>1. The Institute organogram is clear, current and publicly displayed.</p>				
<p>Data Collection Methods Document Review Observation</p>	<p>Describe where/how displayed Note if prepared in past 3 years Is it easily understood by the Monitor?</p>			

STRUCTURE OF THE GUIDELINE

STANDARD 2: THE NI ADMITS, ASSESSES AND SUPPORTS STUDENTS

MONITORING CRITERIA	MET	PARTLY MET	NOT MET	OBSERVATIONS
2.5 The student rotation plan is subject based and reflects the syllabus.				
Data Collection Methods Document Review	Review the rotation plan. If you have questions then interview NIIC.			

STRUCTURE OF THE GUIDELINE

STANDARD 3: THE STUDENTS ARE TAUGHT BY WELL QUALIFIED INSTRUCTORS IN THE CLASSROOM AND IN CLINICAL PLACEMENTS

MONITORING CRITERIA	MET	PARTLY MET	NOT MET	OBSERVATIONS
<p>3.1 The teachers hold the government required qualification as a nursing instructor (i.e. Bachelor degree in nursing/ public health nursing).</p>				
<p>Data Collection Methods Document Review Interview NIIC</p>	<p>Randomly select 10% instructors CVs and list professional qualifications held</p>			

MONITORING PLAN 2015-2017

**2015-16: 10 Nursing
Institutes**

**2016-17: 17 Nursing
Institutes**

**2017-18: 16 Nursing
Institutes**



Monitoring Plan 2016

DATE	NURSING INSTITUTE
23 January	NI Gopalganj (Dhaka) NI Patuakhali (Barisal)
31 January	NI Cox's Bazar (Chittagong) NI Noakhali (Chittagong)
22 February	NI Magura (Khulna) NI Jessore (Khulna)
27 February	NI Kurigram (Rangpur)
5 March	NI Moulvibazer (Sylhet)
13 March	NI Tangail (Dhaka) NI Sirajgong (Rajshahi)

The Monitor Role

ROLE - to assess the degree to which the NI meets the criteria set by DNS with respect to its functioning

- Monitors play a very important role for DNS, serving as both surveyors and as ambassadors
- Monitors are peer reviewers, selected on the basis of interest, experience, and expertise
- No one monitors their own NI

Expectations from Monitors

1. To observe, interview, analyze and synthesize information without bias
2. Adhere to the BNC Code of Ethics and Professional Conduct, avoiding any conflicts of interest
3. Maintains professional approach
4. Adhere to the NIME program policies, procedures and guidelines

Expectations from Monitors

5. Work well within a team; be prompt and well prepared
6. Communicate effectively
7. Establish positive relationships with relevant persons
8. Adhere to established schedules and confirmed plans
9. Apply an effective range of data collection techniques

CURRENT STATUS

- 28 Monitors trained in 2015
- 10 Monitors assigned for 1st phase
- 4 institutions visited
- Well received by NIs & hospitals
- Very good cooperation (staff, students, faculty, etc.)
- Guide was well accepted
- Monitors found it easy to use
- Results will be shared with OSC after 1-2 more NIs visited

Thank You

Must. Salma Khatun

Asst. Professor

Cell: 01716357755

Email: salmajabed@yahoo.com

